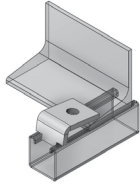


9081BC

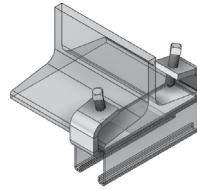
Strut Beam Clamp, Notched



Materials / Finishes:	Zinc (9081BCZ)
	T-304 Stainless Steel (9081BCSS)
Thickness:	1/4
Hole Diameter:	9/16

9082BC

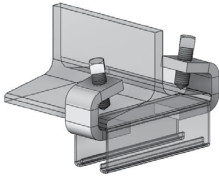
Strut Beam Clamp Light Duty



Materials / Finishes:	Zinc (9082BCZ)
Thickness:	1/4
Hole Diameter:	9/16
Wgt. Each (lbs):	.28

9083BC

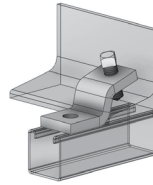
Strut Beam Clamp, Heavy Duty



Materials / Finishes:	Zinc (9083BCZ)
Thickness:	3/8
Hole Diameter:	9/16
Wgt. Each (lbs):	.93

9084BC

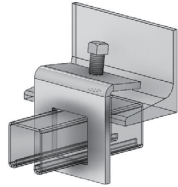
Strut "Z" Beam Clamp, Heavy Duty



Materials / Finishes:	Zinc (9084BCZ)
Thickness:	1/4
Hole Diameter:	9/16
Wgt. Each (lbs):	.64

9085BC

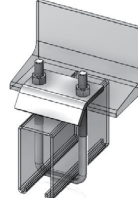
Strut Beam Clamp "Window Type" For 1-5/8" x 1-5/8" Strut



Materials / Finishes:	Zinc (9085BCZ)
Thickness:	1/4
Hole Diameter:	9/16
Wgt. Each (lbs):	1.06

9086BC

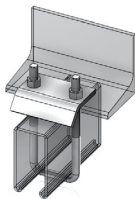
Strut U Bolt Beam Clamp for 13/16" - 1-5/8" Strut



Materials / Finishes:	Zinc (9086BCZ)
	T-304 Stainless Steel (9086BCSS)
	T-316 Stainless Steel (9086BCSX)
Thickness:	1/4
Hole Diameter:	9/16
Wgt. Each (lbs):	.64

9087BC

Strut U Bolt Beam Clamp for 2-7/16" x 3-1/4" Strut



Materials / Finishes:	Zinc (9087BCZ)
	T-304 Stainless Steel (9087BCSS)
	T-316 Stainless Steel (9087BCSX)
Thickness:	1/4
Hole Diameter:	9/16
Wgt. Each (lbs):	.93

PROJECT INFORMATION

PROJECT:

ADDRESS:

CONTRACTOR:

ENGINEER:

DATE:

APPROVED

NOT APPROVED

APPROVAL STAMP

APPROVED AS NOTED

NOTES: