

Materials/Finishes:	Plain Carbon Steel (1900B)	Plain Carbon Steel (1901B)
	Hot Dip Galvanized (1900HDG)	Hot Dip Galvanized (1901HDG)
	T-304 Stainless Steel (1900SS)	T-304 Stainless Steel (1901SS)
	T-316 Stainless Steel (1900SX)	T-316 Stainless Steel (1901SX)
Max Temp:	650°F for Black, 350°F for Hot-Dip Galvanized, 1000°F for Stainless Steel	
Service:	To protect insulation while providing stationary support on beams or accommodating thermal expansion on roller hangers and supports.	
Approvals:	Complies with Manufacturers' Standardization Society SP-58 (Type# 39).	
Ordering:	Specify figure number, finish and insulation size.	

FIG. 1900		1" Insulation Thickness											
PIPE SIZE	SADDLE SIZE	BEAM A	279 A	279 SIZE	275 A	275 SIZE	272 C	272 SIZE	277 C	277 SIZE	WEIGHT EACH, LBS.	MAX. REC. LOAD, LBS.	
3/4	0	1 5/8	4 1/8	2-31/2	3 3/4	3	2 1/16	3	2 1/16	3	1.46	1200	
		1 13/16	4 1/4	2-31/2	3 15/16	3	2 3/16	3	2 3/16	3	1.46	1200	
1 1/4		2	4 7/16	2-31/2	4 1/16	3	2 5/8	3	2 5/8	3	1.46	1200	
1 1/2	1	2 1/16	4 3/8	4-6	4 3/16	3	2 5/8	4	2 1/2	3	1.46	1200	
2	2	2 5/16	4 7/8	4-6	5 1/16	4	2 7/8	4	2 7/8	4	1.43	1200	
2 1/2		2 3/16	5 1/8	4-6	5 3/8	4	3 3/16	5	3 3/8	4	1.43	1200	
3	3	2 7/8	5 7/16	4-6	5 15/16	5	3 7/16	5	3 3/16	5	1.78	1200	
3 1/2	4	3 3/8	5 11/16	4-6	6 3/16	5	3 3/4	6	3 11/16	5	1.99	1200	
4		3 7/16	6	4-6	6 7/16	5	4	6	4	5	1.99	1800	
5		4	6 3/16	4-6	7 1/16	6	4 1/4	7	4 3/8	6	1.99	1800	
6	6	4 1/2	8 3/4	8-10	8 5/16	8	5 3/8	8	5 3/8	8	3.94	1800	
8	8	5 1/2	9 3/16	8-10	9 15/16	10	6 1/2	10	6 3/8	10	4.59	1800	
10		6 11/16	11	8-10	11 1/8	10	8 1/16	12	7 11/16	12	4.59	1800	
12	12	7 7/16	12 1/2	12-14	13 3/8	14	9	16	9	14	7.19	5000	
14		8 3/4	13 3/16	12-14	15	16	9 3/16	16	9 11/16	16	7.19	5000	
16	16	9 3/16	14 11/16	16-20	16 7/16	18	10 9/16	20	10 1/2	18	7.53	5000	
18	18	10 3/16	15 11/16	16-20	18 1/16	20	11 1/8	20	11 1/8	20	8.05	5000	
20	20	11 3/16	16 3/4	22-24	20 3/8	24	13 1/16	24	13 1/16	24	9.26	7200	
24	24	13 3/16	19 3/16	30	24	30	-	-	15 3/16	30	10.7	7200	
30	30	16 3/16	22 3/4	30	-	-	-	-	-	-	13.7	7200	
36	36	19 3/16	26 11/16	36-42	-	-	-	-	-	-	16.0	7200	

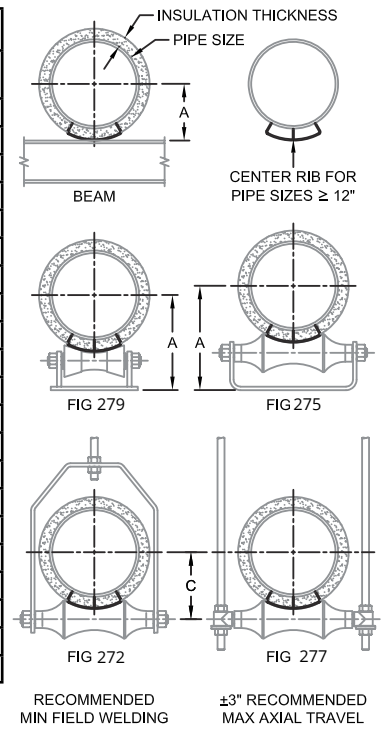
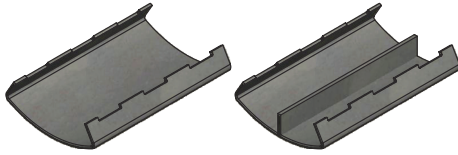


FIG. 1901		1-1/2" Insulation Thickness											
PIPE SIZE	SADDLE SIZE	BEAM A	279 A	279 SIZE	275 A	275 SIZE	272 C	272 SIZE	277 C	277 SIZE	WEIGHT EACH, LBS.	MAX. REC. LOAD, LBS.	
3/4	0	2 1/8	4 11/16	4-6	4 3/16	3	2 11/16	4	2 1/16	3	1.81	1200	
1		2 5/16	4 11/16	4-6	4 7/16	3	2 13/16	4	2 11/16	3	1.81	1200	
1 1/4		2 1/2	5	4-6	5 1/4	4	3 1/16	5	3	4	1.81	1200	
1 1/2		2 5/8	5 1/8	4-6	5 3/8	4	3 3/16	5	3 3/8	4	1.81	1200	
2	2	2 13/16	5 3/8	4-6	5 7/8	5	3 3/8	5	3 3/8	5	1.99	1200	
2 1/2	3	3 1/16	5 5/8	4-6	6 1/8	5	3 11/16	6	3 3/8	5	2.13	1200	
3		3 3/16	6	4-6	6 7/16	5	4 1/16	6	4	5	2.13	1800	
3 1/2	4	3 3/8	6 3/16	4-6	7	6	4 3/16	7	4 1/4	6	2.19	1800	
4		3 15/16	6 1/2	4-6	7 1/4	6	4 9/16	7	4 9/16	6	2.19	1800	
5		4 1/2	7 1/16	4-6	8	7	5 3/16	8	5 3/16	7	2.19	1800	
6	6	5	9 1/4	8-10	9 7/16	10	5 7/8	10	5 7/8	10	4.99	1800	
8	8	6	10 9/16	8-10	10 9/16	10	7	12	6 15/16	10	5.52	1800	
10		7 3/16	11 1/2	8-10	12 3/16	12	8 3/16	14	8 3/16	12	5.52	1800	
12	12	8 1/16	13	12-14	14 3/16	16	9 1/2	16	9 1/2	16	8.07	5000	
14		8 3/4	14 3/16	16-20	15 1/2	16	10 1/16	18	10 1/4	16	8.07	5000	
16	16	9 11/16	15 3/16	16-20	17	18	11 1/16	20	11 1/16	18	9.26	5000	
18	18	10 11/16	16 1/4	22-24	18 3/8	20	12 3/16	24	12 3/16	20	9.55	5000	
20	20	11 11/16	17 3/16	22-24	21 3/8	24	13 3/16	24	13 3/16	24	10.5	7200	
24	24	13 11/16	20 3/8	30	24 1/2	30	-	-	15 13/16	30	11.3	7200	
30	30	16 11/16	24 7/8	36-42	-	-	-	-	-	-	15.8	7200	
36	36	19 11/16	27 3/16	36-42	-	-	-	-	-	-	17.2	7200	

SS LOAD CORRECTION (2)	
TEMP °F	FACTOR
100	1.00
200	0.80
400	0.67
600	0.59
800	0.54
1000	0.50



Materials/Finishes:	Plain Carbon Steel (1902B)	Plain Carbon Steel (1903B)
	Hot Dip Galvanized (1902HDG)	Hot Dip Galvanized (1903HDG)
	T-304 Stainless Steel (1902SS)	T-304 Stainless Steel (1903SS)
	T-316Stainless Steel (1902SX)	T-316 Stainless Steel (1903SX)
Max Temp:	650°F for Black, 350°F for Hot-Dip Galvanized, 1000°F for Stainless Steel	
Service:	To protect insulation while providing stationary support on beams or accommodating thermal expansion on roller hangers and supports.	
Approvals:	Complies with Manufacturers' Standardization Society SP-58 (Type# 39).	
Ordering:	Specify figure number, finish and insulation size.	

FIG. 1902		2" Insulation Thickness											
PIPE SIZE	SADDLE SIZE	BEAM A	279 A	279 SIZE	275 A	275 SIZE	272 C	272 SIZE	277 C	277 SIZE	WEIGHT EACH, LBS.	MAX. REC. LOAD, LBS.	
3/4	0	2 ⁵ / ₁₆	5 ¹ / ₁₆	4-6	5 ¹ / ₁₆	5	3 ¹ / ₄	5	3 ¹ / ₄	5	2.49	1200	
1		2 ¹³ / ₁₆	5 ³ / ₈	4-6	5 ⁷ / ₈	5	3 ³ / ₈	5	3 ³ / ₈	5	2.49	1200	
1 1/4		3	5 ⁵ / ₁₆	4-6	6 ¹ / ₁₆	5	3 ³ / ₈	5	3 ¹ / ₁₆	5	2.49	1200	
1 1/2	2	3 ¹ / ₁₆	5 ⁵ / ₈	4-6	6 ¹ / ₁₆	5	3 ¹ / ₁₆	6	3 ¹ / ₁₆	5	2.70	1800	
2		3 ⁵ / ₁₆	5 ¹ / ₁₆	4-6	6 ³ / ₈	5	3 ¹ / ₁₆	6	3 ¹ / ₁₆	5	2.70	1800	
2 1/2		3 ⁵ / ₈	6 ¹ / ₁₆	4-6	6 ¹ / ₁₆	5	4 ¹ / ₁₆	7	4 ¹ / ₁₆	6	2.70	1800	
3	3	3 ⁷ / ₈	6 ¹ / ₂	4-6	7 ¹ / ₄	6	4 ³ / ₁₆	7	4 ³ / ₁₆	7	2.99	1800	
3 1/2		4 ³ / ₁₆	6 ³ / ₄	4-6	7 ¹ / ₁₆	7	5	8	4 ¹ / ₁₆	7	2.99	1800	
4		4 ⁷ / ₁₆	7	4-6	7 ¹ / ₁₆	7	5 ¹ / ₄	8	5 ¹ / ₈	7	2.99	1800	
5	6	5	7 ¹ / ₁₆	4-6	8 ¹ / ₁₆	8	5 ⁷ / ₈	10	5 ⁷ / ₈	8	2.99	1800	
6		5 ¹ / ₂	9 ¹ / ₁₆	8-10	9 ¹ / ₁₆	10	6 ³ / ₈	10	6 ³ / ₈	10	5.46	1800	
8		6 ¹ / ₂	11 ³ / ₈	12-14	11 ¹ / ₁₆	12	7 ⁷ / ₁₆	12	7 ⁷ / ₁₆	12	6.28	1800	
10	10	7 ³ / ₁₆	12 ¹ / ₂	12-14	13 ³ / ₈	14	9	16	9	14	7.01	1800	
12		8 ³ / ₁₆	14	16-20	15 ³ / ₈	16	9 ⁷ / ₈	18	10 ¹ / ₁₆	16	9.90	5000	
14		9 ¹ / ₄	14 ¹ / ₁₆	16-20	16 ¹ / ₈	16	10 ⁹ / ₁₆	18	10 ¹ / ₁₆	16	9.90	5000	
16	16	10 ³ / ₁₆	15 ¹ / ₁₆	16-20	18 ¹ / ₁₆	20	11 ³ / ₈	20	11 ³ / ₈	20	10.2	5000	
18		11 ³ / ₁₆	16 ³ / ₄	22-24	20 ⁷ / ₈	24	13 ¹ / ₁₆	24	13 ¹ / ₁₆	24	10.9	7200	
20		12 ¹ / ₁₆	17 ¹ / ₁₆	22-24	21 ¹ / ₁₆	24	-	-	14 ¹ / ₁₆	24	11.5	7200	
24	24	14 ¹ / ₁₆	20 ³ / ₈	30	25	30	-	-	16 ¹ / ₁₆	30	12.7	7200	
30		17 ¹ / ₁₆	24 ³ / ₈	36-42	-	-	-	-	-	-	17.6	7200	
36		20 ³ / ₁₆	27 ³ / ₄	36-42	-	-	-	-	-	-	19.4	7200	

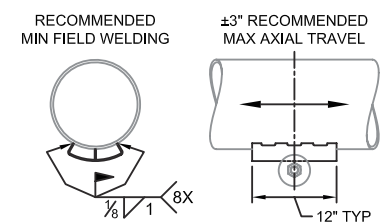
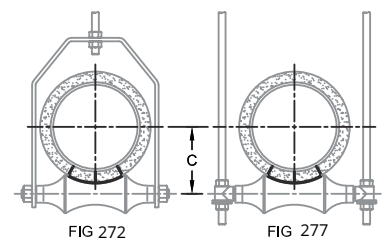
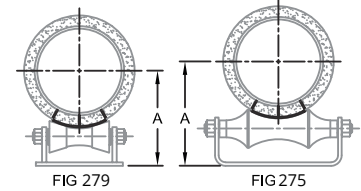
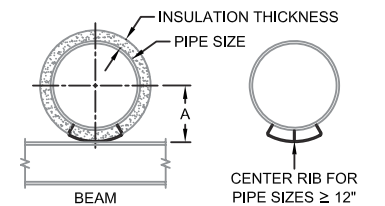
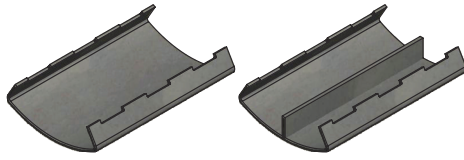


FIG. 1903		2-1/2" Insulation Thickness											
PIPE SIZE	SADDLE SIZE	BEAM A	279 A	279 SIZE	275 A	275 SIZE	272 C	272 SIZE	277 C	277 SIZE	WEIGHT EACH, LBS.	MAX. REC. LOAD, LBS.	
3/4	0	3 ³ / ₈	5 ³ / ₄	4-6	6 ³ / ₁₆	5	3 ³ / ₄	6	3 ³ / ₄	5	3.10	1200	
1		3 ⁵ / ₁₆	5 ⁵ / ₈	4-6	6 ³ / ₈	5	3 ¹ / ₁₆	6	3 ³ / ₈	5	3.10	1200	
1 1/4	1	3 ¹ / ₁₆	6 ¹ / ₁₆	4-6	6 ¹ / ₁₆	6	4 ¹ / ₁₆	6	4 ¹ / ₁₆	6	3.09	1200	
1 1/2		3 ³ / ₁₆	6 ³ / ₁₆	4-6	6 ¹ / ₁₆	6	4 ¹ / ₄	7	4 ³ / ₁₆	6	3.09	1800	
2		3 ⁷ / ₈	6 ¹ / ₁₆	4-6	7 ³ / ₁₆	6	4 ³ / ₁₆	7	4 ⁷ / ₁₆	6	3.09	1800	
2 1/2	2	4 ¹ / ₁₆	6 ¹ / ₁₆	4-6	7 ⁵ / ₈	7	4 ¹ / ₁₆	8	4 ³ / ₄	7	3.32	1800	
3		4 ³ / ₁₆	7	4-6	7 ¹ / ₁₆	7	5 ¹ / ₄	8	5 ¹ / ₈	7	3.32	1800	
3 1/2		4 ⁵ / ₁₆	8 ³ / ₈	8-10	8 ¹ / ₂	8	5 ¹ / ₂	10	5 ¹ / ₂	8	3.69	1800	
4	4	4 ¹ / ₁₆	9 ¹ / ₁₆	8-10	8 ³ / ₄	8	5 ³ / ₄	10	5 ¹ / ₁₆	8	3.69	1800	
5		5 ¹ / ₂	9 ³ / ₄	8-10	9 ¹ / ₁₆	10	6 ¹ / ₂	12	6 ⁵ / ₁₆	10	3.69	1800	
6		6	10 ³ / ₁₆	8-10	10 ¹ / ₂	10	7	12	6 ¹ / ₁₆	10	6.18	1800	
8	8	7	11 ¹ / ₁₆	12-14	12 ¹ / ₄	12	8 ³ / ₈	14	8 ³ / ₁₆	12	6.82	1800	
10		8 ³ / ₁₆	13 ¹ / ₂	16-20	14 ¹ / ₁₆	16	9 ¹ / ₂	16	9 ¹ / ₂	16	7.14	1800	
12		9 ¹ / ₁₆	14 ¹ / ₂	16-20	16 ¹ / ₁₆	18	10 ³ / ₈	18	10 ³ / ₈	18	11.1	5000	
14	12	9 ³ / ₄	15 ¹ / ₄	16-20	17	18	11 ³ / ₁₆	20	11 ¹ / ₁₆	18	11.1	5000	
16		10 ¹ / ₁₆	16 ¹ / ₄	22-24	18 ³ / ₈	20	12 ³ / ₁₆	24	12 ³ / ₁₆	20	11.9	7200	
18		11 ¹ / ₁₆	17 ⁵ / ₁₆	22-24	21 ³ / ₈	24	13 ³ / ₁₆	24	13 ³ / ₁₆	24	12.5	7200	
20	20	12 ¹ / ₁₆	19 ¹ / ₁₆	30	23 ¹ / ₂	30	-	-	14 ¹ / ₁₆	30	13.1	7200	
24		14 ¹ / ₁₆	21 ³ / ₁₆	30	25 ¹ / ₂	30	-	-	16 ¹ / ₁₆	30	14.6	7200	
30		17 ¹ / ₁₆	25 ³ / ₁₆	36-42	-	-	-	-	-	-	20.1	7200	
36	20 ¹ / ₁₆	28 ¹ / ₄	36-42	-	-	-	-	-	-	21.6	7200		

SS LOAD CORRECTION (2)	
TEMP °F	FACTOR
100	1.00
200	0.80
400	0.67
600	0.59
800	0.54
1000	0.50

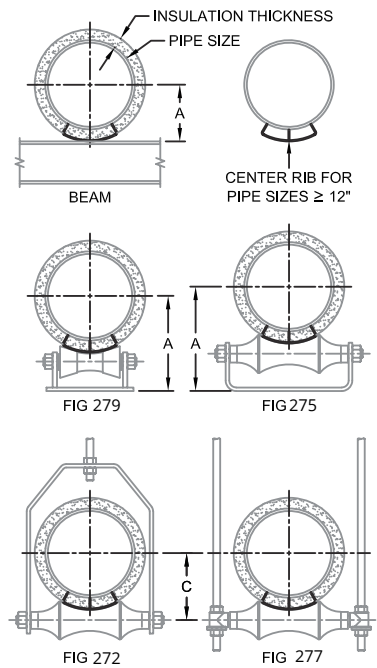


Materials/Finishes:	Plain Carbon Steel (1904B)	Plain Carbon Steel (1906B)
	Hot Dip Galvanized (1904HDG)	Hot Dip Galvanized (1906HDG)
	T-304 Stainless Steel (1904SS)	T-304 Stainless Steel (1906SS)
	T-316Stainless Steel (1904SX)	T-316 Stainless Steel (1906SX)
Max Temp:	650°F for Black, 350°F for Hot-Dip Galvanized, 1000°F for Stainless Steel	
Service:	To protect insulation while providing stationary support on beams or accommodating thermal expansion on roller hangers and supports.	
Approvals:	Complies with Manufacturers' Standardization Society SP-58 (Type# 39).	
Ordering:	Specify figure number, finish and insulation size.	

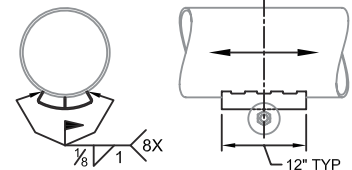
FIG. 1904		3" Insulation Thickness										WEIGHT EACH, LBS.	MAX. REC. LOAD, LBS.
PIPE SIZE	SADDLE SIZE	BEAM A	279 A	279 SIZE	275 A	275 SIZE	272 C	272 SIZE	277 C	277 SIZE			
3/4	1	3 3/8	6 1/4	4-6	7	6	4 5/16	7	4 5/16	6	3.90	1200	
1		3 3/16	6 3/8	4-6	7 1/8	6	4 1/2	7	4 1/16	6	3.90	1200	
1 1/4		4	6 1/16	4-6	7 3/16	6	4 1 1/16	7	4 3/8	6	3.90	1200	
1 1/2	2	4 1/8	6 1 1/16	4-6	7 7/16	6	4 1 5/16	8	4 1 3/16	7	3.90	1800	
2		4 5/16	6 1 5/16	4-6	8 1/8	8	5 3/16	8	5 3/16	8	4.20	1800	
2 1/2		4 9/16	8 1 3/16	8-10	8 7/16	8	5 5/16	10	5 5/16	8	4.20	1800	
3	3	4 7/8	9 1/8	8-10	9 1/16	10	5 3/4	10	5 3/4	10	4.50	1800	
3 1/2		5 1/16	9 7/16	8-10	9 5/8	10	6	10	6	10	4.50	1800	
4		5 1/16	9 1 1/16	8-10	9 7/8	10	6 1/4	10	6 1/4	10	4.50	1800	
5	6	6	10 1/4	8-10	10 1/16	10	7	12	6 3/8	10	4.50	1800	
6		6 1/2	11 3/8	12-14	11 1 1/16	12	7 7/16	12	7 7/16	12	7.70	1800	
8		7 7/8	12 1/2	12-14	13 3/16	14	9 1/16	16	9	14	7.70	1800	
10	10	8 7/16	14	16-20	15 3/8	16	9 1 3/16	18	10 1/16	16	9.05	1800	
12	12	9 9/16	15 1/16	16-20	16 7/8	18	10 1 5/16	20	10 1 5/16	18	11.6	5000	
14		10 1/4	15 3/4	16-20	17 7/16	18	11 1 1/16	20	11 1 3/16	20	11.6	5000	
16	16	11 3/16	16 3/4	22-24	20 7/8	24	13 1/16	24	13 1/16	24	12.7	7200	
18	18	12 3/16	17 1 3/16	22-24	21 1 5/16	24	-	-	14 1/16	24	13.3	7200	
20	20	13 3/16	19 3/16	30	24	30	-	-	15 5/16	30	14.0	7200	
24	24	15 3/16	21 1 1/16	30	26	30	-	-	17 3/8	30	15.3	7200	
30	30	18 3/16	25 1 1/16	36-42	-	-	-	-	-	-	20.1	7200	
36	36	21 3/16	28 3/4	36-42	-	-	-	-	-	-	21.9	7200	



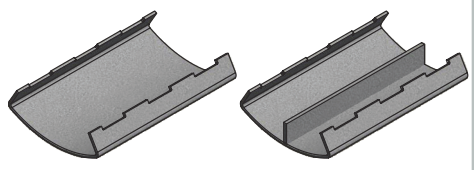
FIG. 1906		3-1/2" Insulation Thickness										WEIGHT EACH, LBS.	MAX. REC. LOAD, LBS.
PIPE SIZE	SADDLE SIZE	BEAM A	279 A	279 SIZE	275 A	275 SIZE	272 C	272 SIZE	277 C	277 SIZE			
1	1	4 7/16	8 1/2	8-10	7 7/8	7	5 1/8	8	5	7	4.62	1200	
1 1/4		4 1/2	8 3/4	8-10	8 1/16	7	5 5/16	8	5 1/4	7	4.62	1200	
1 1/2		4 3/8	8 7/8	8-10	8 3/16	7	5 5/16	10	5 1/16	8	4.62	1800	
2	2	4 1 3/16	9 1/16	8-10	9 1/4	10	5 1 1/16	10	5 1 1/16	10	5.04	1800	
2 1/2		5 1/8	9 3/8	8-10	9 9/16	10	5 1 5/16	10	5 1 5/16	10	5.04	1800	
3		5 1/16	9 1 1/16	8-10	9 7/8	10	6 1/4	10	6 1/4	10	5.04	1800	
4	4	5 7/8	10 3/16	8-10	11	12	6 7/8	12	6 7/8	12	5.80	1800	
5		6 1/2	10 3/4	8-10	11 1/16	12	7 1 3/16	14	7 1/2	12	5.80	1800	
6		7	11 1 5/16	12-14	12 1/4	12	8 3/8	14	8 3/16	12	8.81	1800	
8	6	8 1/8	13 1/2	16-20	14 7/8	16	9 1/16	16	9 1/16	16	8.81	1800	
10	10	9 1/16	14 1/2	16-20	16 5/16	18	10 3/8	18	10 3/8	18	10.4	1800	
12	12	10 1/16	15 5/16	16-20	17 7/8	20	11 1/16	20	11 1/16	20	12.4	5000	
14		10 3/4	16 5/16	22-24	18 3/8	20	12 5/8	24	12 3/16	20	12.4	5000	
16	16	11 1 1/16	17 1/16	22-24	21 3/8	24	13 3/16	24	13 3/16	24	14.7	7200	
18	18	12 1 1/16	19 1/16	30	22 1/2	24	-	-	14 1 1/16	24	15.0	7200	
20	20	13 1 1/16	20 7/8	30	24 1/2	30	-	-	15 1 5/16	30	15.7	7200	
24	24	15 1 1/16	22 3/16	30	26 7/8	30	-	-	17 1 5/16	30	17.2	7200	
30	30	18 1 1/16	26 3/16	36-42	-	-	-	-	-	-	22.0	7200	
36	36	21 1 1/16	29 1/4	36-42	-	-	-	-	-	-	23.8	7200	



RECOMMENDED MIN FIELD WELDING ±3" RECOMMENDED MAX AXIAL TRAVEL



SS LOAD CORRECTION ⁽²⁾	
TEMP °F	FACTOR
100	1.00
200	0.80
400	0.67
600	0.59
800	0.54
1000	0.50



Materials/Finishes:	Plain Carbon Steel (1905B)	Plain Carbon Steel (1907B)
	Hot Dip Galvanized (1905HDG)	Hot Dip Galvanized (1907HDG)
	T-304 Stainless Steel (1905SS)	T-304 Stainless Steel (1907SS)
	T-316 Stainless Steel (1905SX)	T-316 Stainless Steel (1907SX)
Max Temp:	650°F for Black, 350°F for Hot-Dip Galvanized, 1000°F for Stainless Steel	
Service:	To protect insulation while providing stationary support on beams or accommodating thermal expansion on roller hangers and supports.	
Approvals:	Complies with Manufacturers' Standardization Society SP-58 (Type# 39).	
Ordering:	Specify figure number, finish and insulation size.	

FIG. 1905		4" Insulation Thickness										
PIPE SIZE	SADDLE	BEAM A	279 A	279 SIZE	275 A	275 SIZE	272 C	272 SIZE	277 C	277 SIZE	WEIGHT EACH, LBS.	MAX. REC. LOAD, LBS.
1	1	4 ¹³ / ₁₆	9 ¹ / ₁₆	8-10	9 ³ / ₄	10	5 ¹¹ / ₁₆	10	5 ¹¹ / ₁₆	10	5.25	1200
1 ¹ / ₄		5	9 ³ / ₄	8-10	9 ⁹ / ₁₆	10	5 ¹¹ / ₁₆	10	5 ⁷ / ₈	10	5.25	1200
1 ¹ / ₂		5 ⁵ / ₈	9 ³ / ₈	8-10	9 ⁹ / ₁₆	10	6	10	6	10	5.25	1800
2	2	5 ⁵ / ₁₆	9 ³ / ₈	8-10	9 ³ / ₄	10	6 ³ / ₁₆	10	6 ³ / ₁₆	10	5.17	1800
2 ¹ / ₂		5 ⁷ / ₈	9 ⁷ / ₈	8-10	10 ¹ / ₁₆	10	6 ⁷ / ₈	12	6 ⁷ / ₁₆	10	5.17	1800
3		5 ¹⁵ / ₁₆	10 ³ / ₁₆	8-10	10 ³ / ₈	10	6 ¹⁵ / ₁₆	12	6 ¹³ / ₁₆	10	5.17	1800
4	4	6 ³ / ₈	10 ¹¹ / ₁₆	8-10	11 ⁹ / ₁₆	12	7 ³ / ₄	14	7 ⁷ / ₁₆	12	5.77	1800
5		7	11 ⁷ / ₈	12-14	12 ⁵ / ₈	12	8 ⁵ / ₁₆	14	8 ¹ / ₁₆	12	5.77	1800
6	6	7 ¹ / ₂	12 ¹ / ₁₆	12-14	13 ³ / ₁₆	14	8 ⁹ / ₁₆	16	8 ¹⁵ / ₁₆	14	9.66	1800
8		8 ⁷ / ₈	14	16-20	15 ³ / ₈	16	9 ⁷ / ₈	18	10 ¹ / ₁₆	16	9.66	1800
10	10	9 ⁹ / ₁₆	15 ¹ / ₁₆	16-20	16 ⁷ / ₈	18	10 ¹⁵ / ₁₆	20	10 ¹ / ₁₆	18	11.0	1800
12	12	10 ⁹ / ₁₆	16 ⁵ / ₈	22-24	18 ¹ / ₁₆	20	12 ¹ / ₁₆	24	12 ¹ / ₁₆	20	14.9	5000
14		11 ¹ / ₄	16 ¹³ / ₁₆	22-24	19 ⁹ / ₁₆	20	13 ¹ / ₈	24	12 ³ / ₄	20	14.9	7200
16	16	12 ³ / ₁₆	17 ¹³ / ₁₆	22-24	21 ¹⁵ / ₁₆	24	14 ¹ / ₁₆	24	14 ¹ / ₁₆	24	14.2	7200
18	18	13 ³ / ₁₆	19 ⁵ / ₈	30	24	30	-	-	15 ³ / ₁₆	30	16.3	7200
20	20	14 ³ / ₁₆	20 ⁵ / ₈	30	25	30	-	-	16 ⁵ / ₁₆	30	15.8	7200
24	24	16 ³ / ₁₆	22 ³ / ₄	30	-	-	-	-	-	-	16.8	7200
30	30	19 ⁹ / ₁₆	26 ¹ / ₁₆	36-42	-	-	-	-	-	-	26.6	7200
36	36	22 ³ / ₁₆	-	-	-	-	-	-	-	-	26.9	7200

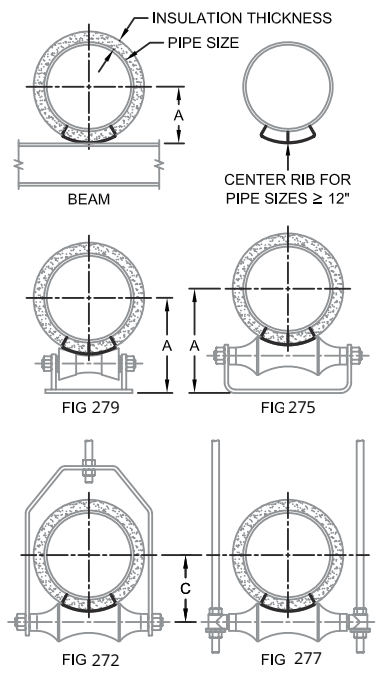
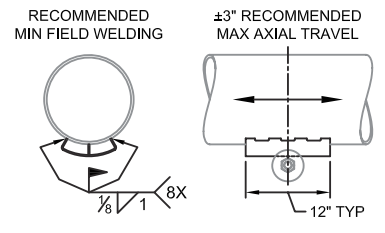
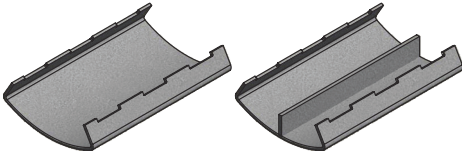


FIG. 1907		4-1/2" Insulation Thickness										
PIPE SIZE	SADDLE	BEAM A	279 A	279 SIZE	275 A	275 SIZE	272 C	272 SIZE	277 C	277 SIZE	WEIGHT EACH, LBS.	MAX. REC. LOAD, LBS.
1	1	5 ⁵ / ₁₆	9 ⁹ / ₁₆	8-10	9 ³ / ₄	10	6 ⁷ / ₈	10	6 ⁷ / ₈	10	5.88	1200
1 ¹ / ₄		5 ¹ / ₂	9 ³ / ₄	8-10	9 ¹⁵ / ₁₆	10	6 ⁵ / ₁₆	10	6 ⁵ / ₁₆	10	5.88	1200
1 ¹ / ₂		5 ⁷ / ₈	9 ⁷ / ₈	8-10	10 ¹ / ₁₆	10	6 ⁵ / ₈	12	6 ⁷ / ₁₆	10	5.88	1800
2	2	5 ¹³ / ₁₆	10 ³ / ₈	8-10	10 ¹⁵ / ₁₆	12	6 ¹³ / ₁₆	12	6 ¹³ / ₁₆	12	5.96	1800
2 ¹ / ₂		6 ¹ / ₈	10 ³ / ₈	8-10	11 ³ / ₁₆	12	7 ¹ / ₈	12	7 ¹ / ₈	12	5.96	1800
3		6 ⁷ / ₁₆	10 ³ / ₄	8-10	11 ⁹ / ₁₆	12	7 ⁷ / ₁₆	12	7 ⁷ / ₁₆	12	5.96	1800
4	4	6 ¹⁵ / ₁₆	11 ⁷ / ₈	12-14	12 ¹⁵ / ₁₆	14	8 ⁵ / ₁₆	14	8 ⁵ / ₁₆	14	9.21	1800
5		7 ⁹ / ₁₆	12 ¹ / ₁₆	12-14	13 ¹ / ₂	14	8 ⁹ / ₁₆	16	8 ⁷ / ₈	14	9.21	1800
6	6	8	13 ³ / ₁₆	16-20	14 ³ / ₄	16	9 ¹ / ₁₆	16	9 ¹ / ₁₆	16	9.74	1800
8		9 ⁷ / ₈	14 ¹ / ₂	16-20	16 ⁵ / ₁₆	18	10 ³ / ₈	18	10 ³ / ₈	18	9.74	1800
10	10	10 ¹ / ₁₆	15 ⁵ / ₁₆	16-20	17 ⁷ / ₈	20	11 ³ / ₁₆	20	11 ³ / ₁₆	20	11.1	1800
12	12	11 ¹ / ₁₆	16 ⁵ / ₈	22-24	20 ³ / ₄	24	12 ¹⁵ / ₁₆	24	12 ¹⁵ / ₁₆	24	14.6	5000
14		11 ³ / ₄	17 ³ / ₈	22-24	21 ⁷ / ₁₆	24	13 ³ / ₈	24	13 ³ / ₈	24	14.6	7200
16	16	12 ¹ / ₁₆	19 ¹ / ₁₆	30	22 ¹ / ₂	24	-	-	14 ¹ / ₁₆	24	14.5	7200
18	18	13 ¹ / ₁₆	20 ⁵ / ₈	30	24 ¹ / ₂	30	-	-	15 ³ / ₁₆	30	17.2	7200
20	20	14 ¹ / ₁₆	21 ³ / ₁₆	30	25 ¹ / ₂	30	-	-	16 ³ / ₁₆	30	17.2	7200
24	24	17	24 ³ / ₈	36-42	-	-	-	-	-	-	17.1	7200
30	30	20 ⁹ / ₁₆	27 ⁹ / ₁₆	36-42	-	-	-	-	-	-	25.9	7200
36	36	23 ³ / ₁₆	-	-	-	-	-	-	-	-	27.9	7200



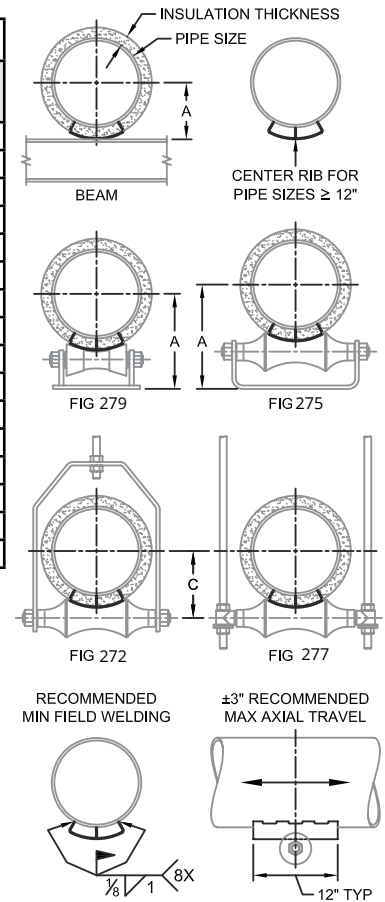
SS LOAD CORRECTION (2)	
TEMP °F	FACTOR
100	1.00
200	0.80
400	0.67
600	0.59
800	0.54
1000	0.50



Materials/Finishes:	Plain Carbon Steel (1909B)	Hot Dip Galvanized (1909HDG)
	T-304 Stainless Steel (1909SS)	T-316Stainless Steel (1909SX)
Max Temp:	650°F for Black, 350°F for Hot-Dip Galvanized, 1000°F for Stainless Steel	
Service:	To protect insulation while providing stationary support on beams or accommodating thermal expansion on roller hangers and supports.	
Approvals:	Complies with Manufacturers' Standardization Society SP-58 (Type# 39).	
Ordering:	Specify figure number, finish and insulation size.	

FIG. 1909		5" Insulation Thickness										WEIGHT EACH, LBS.	MAX. REC. LOAD, LBS.
PIPE SIZE	SADDLE SIZE	BEAM A	279 A	279 SIZE	275 A	275 SIZE	272 C	272 SIZE	277 C	277 SIZE			
2	3	6 ⁵ / ₁₆	10 ⁵ / ₁₆	8-10	11 ¹ / ₁₆	12	7 ¹ / ₁₆	12	7 ³ / ₈	12	6.58	1800	
2½		6 ⁵ / ₁₆	11 ¹ / ₁₆	12-14	11 ³ / ₄	12	7 ¹⁵ / ₁₆	14	7 ¹ / ₄	12	6.58	1800	
3		6 ¹⁵ / ₁₆	11 ¹³ / ₁₆	12-14	12 ¹ / ₁₆	12	8 ⁵ / ₁₆	14	8	12	6.58	1800	
4	4	7 ⁷ / ₈	12 ⁵ / ₁₆	12-14	13 ³ / ₈	14	8 ¹³ / ₁₆	16	8 ³ / ₄	14	6.65	1800	
5		8	12 ⁵ / ₁₆	12-14	14	16	9 ⁷ / ₈	16	9 ¹ / ₁₆	16	6.65	1800	
6	6	8 ¹ / ₂	13 ¹⁵ / ₁₆	16-20	15 ⁵ / ₁₆	16	9 ³ / ₄	18	10	16	11.6	1800	
8		9 ⁹ / ₁₆	15 ¹ / ₁₆	16-20	16 ¹³ / ₁₆	18	11	20	10 ⁷ / ₈	18	11.6	1800	
10	10	10 ⁹ / ₁₆	16 ¹ / ₈	16-20	18 ¹ / ₂	20	12 ⁷ / ₁₆	24	12 ¹ / ₁₆	20	12.0	1800	
12	12	11 ¹ / ₁₆	17 ³ / ₁₆	22-24	21 ¹ / ₄	24	13 ³ / ₁₆	24	12 ⁷ / ₁₆	24	16.5	5000	
14	14	12 ¹ / ₄	17 ⁷ / ₁₆	22-24	21 ¹⁵ / ₁₆	24	14 ¹ / ₈	24	14 ¹ / ₈	24	16.6	7200	
16	16	13 ³ / ₁₆	19 ⁹ / ₁₆	30	24	30	-	-	15 ¹⁵ / ₁₆	30	17.8	7200	
18	18	14 ³ / ₁₆	20 ⁵ / ₁₆	30	25	30	-	-	16 ⁵ / ₁₆	30	18.4	7200	
20	20	15 ³ / ₁₆	21 ¹ / ₁₆	30	26 ¹ / ₁₆	30	-	-	17 ³ / ₈	30	19.1	7200	
24	24	17 ³ / ₁₆	24 ³ / ₁₆	36-42	-	-	-	-	-	-	20.4	7200	
30	30	20 ³ / ₁₆	27 ¹ / ₄	36-42	-	-	-	-	-	-	28.7	7200	
36	36	23 ³ / ₁₆	-	-	-	-	-	-	-	-	30.7	7200	

1. Maximum recommended load shown for beam supported saddle. Maximum recommended load may be limited by the allowable roller load or other components in the load path.
2. Maximum recommended load shown for carbon steel. For recommended load for Stainless Steel, multiply the above load by the load/temperature correction factor.
3. For 30" and 36" pipe sizes, indicate roller Figure Number when ordering.
4. Selection size for Figure #280 Adjustable Roller Stand is the same as the Figure #279.
5. For other pipe sizes, insulation thickness, axial travels, or support configurations contact factory.



SS LOAD CORRECTION ⁽²⁾	
TEMP °F	FACTOR
100	1.00
200	0.80
400	0.67
600	0.59
800	0.54
1000	0.50

PROJECT INFORMATION	APPROVAL STAMP
Project:	APPROVED AS NOTED
Address:	NOTES:
Contractor:	
Engineer:	
Date:	
APPROVED	
NOT APPROVED	